

"It was known that mines of the precious metals existed to a considerable extent in California at the time of its acquisition. Recent discoveries render it probable that these mines are more extensive and valuable than was anticipated. The accounts of the abundance of gold in that territory are of such an extraordinary character as would scarcely command belief \* \* \*. The effects produced by the discovery of these rich mineral deposits, and the success which has attended the labors of those who have resorted to them, have produced a surprising change in the state of affairs in California."

James K. Polk  
The President of the United States  
December 5, 1848

# MAP OF CALIFORNIA HISTORIC GOLD MINES

The California  
Gold Discovery To Statehood  
Sesquicentennial (1998 - 2000) Edition

Poster Prepared by Les Youngs

1998



### EXPLANATION

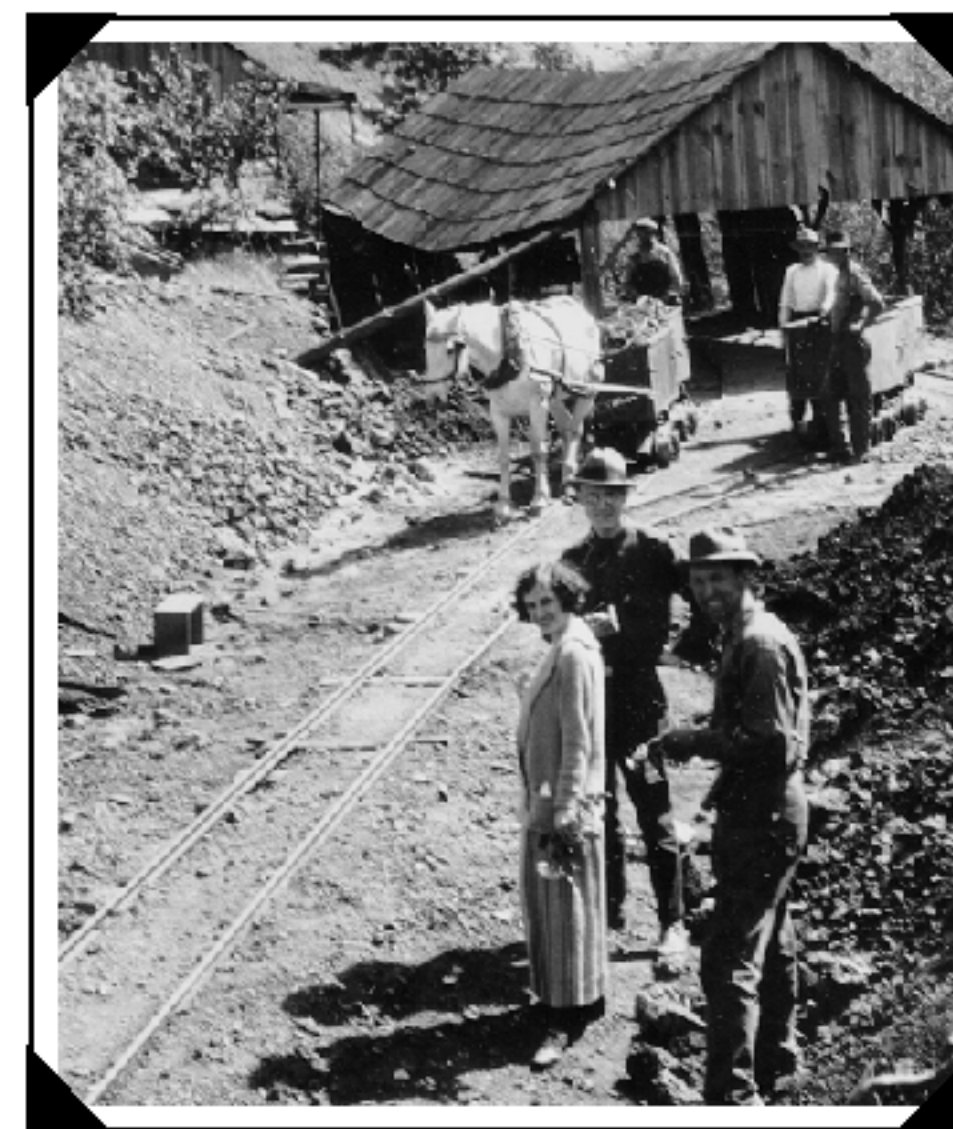
- ◆ Historic Lode Gold Mine Location
- Historic Placer Gold Mine Location
- ★ Active Gold Mine Location (1996-1998)

This map shows the locations of 9,359 historic lode gold mines and prospects, the locations of 4,112 historic placer gold mines, and the locations of 18 active gold mines. The data are from the California Department of Conservation's Division of Mines and Geology and Office of Mine Reclamation.

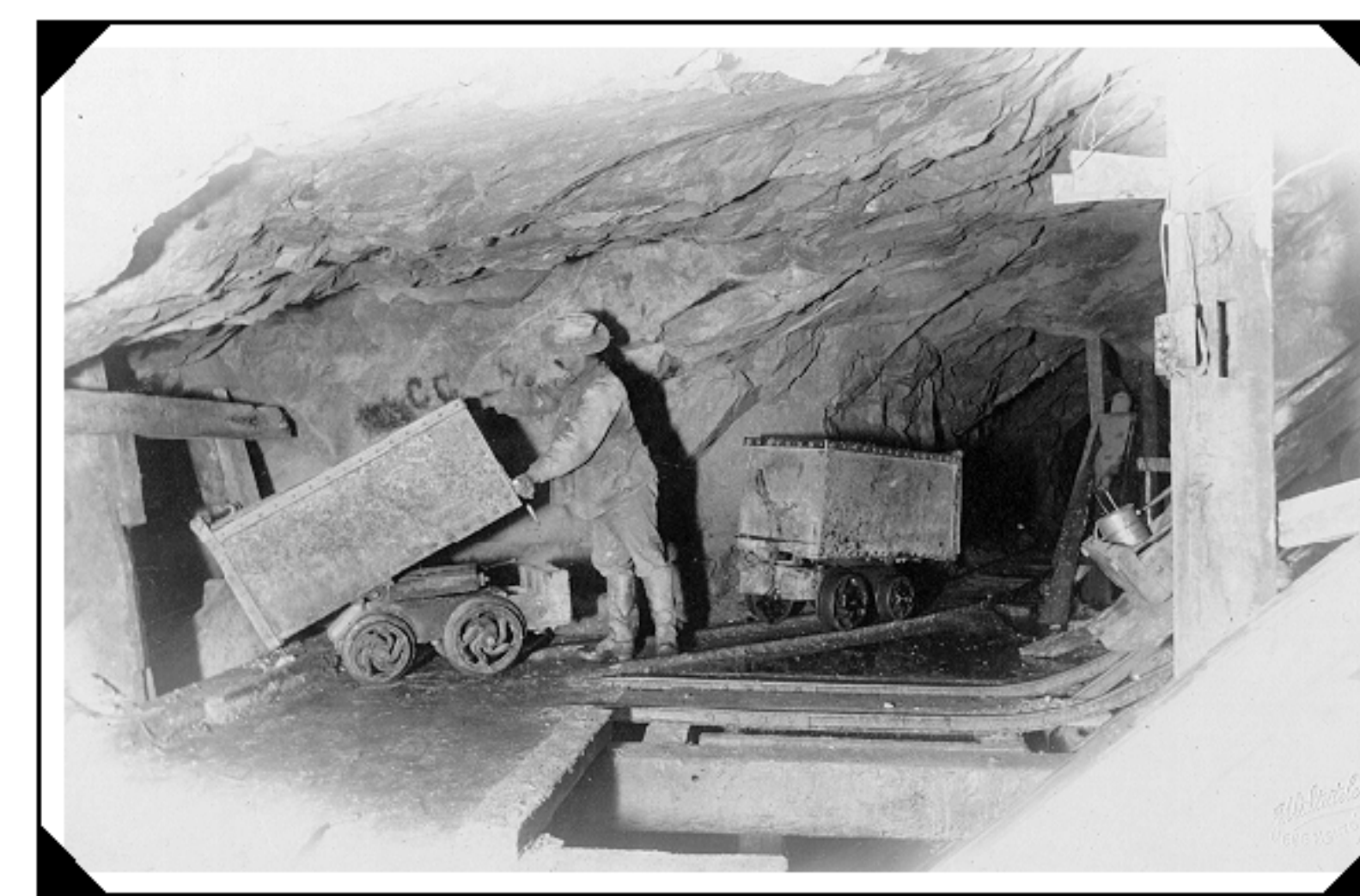
Scale 1:1,500,000

0 25 50  
Miles

0 10 20  
Kilometers



Basic lode mining, circa 1920s.  
Division of Mines and Geology archives.



Station 1000 feet level, Omaha Mine - Grass Valley, circa 1860s.  
Division of Mines and Geology archives.

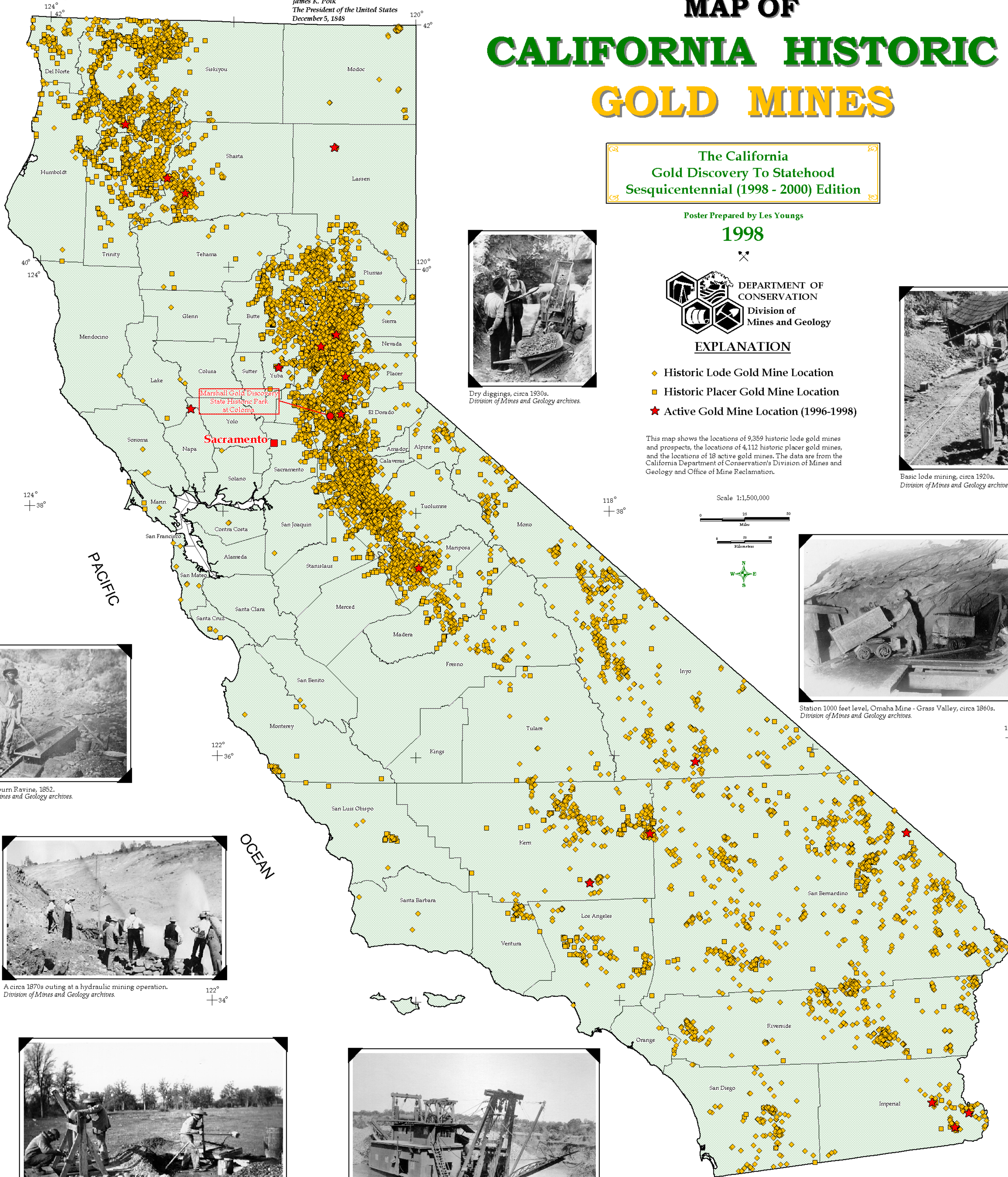
114°  
+ 36°

114°  
+ 34°

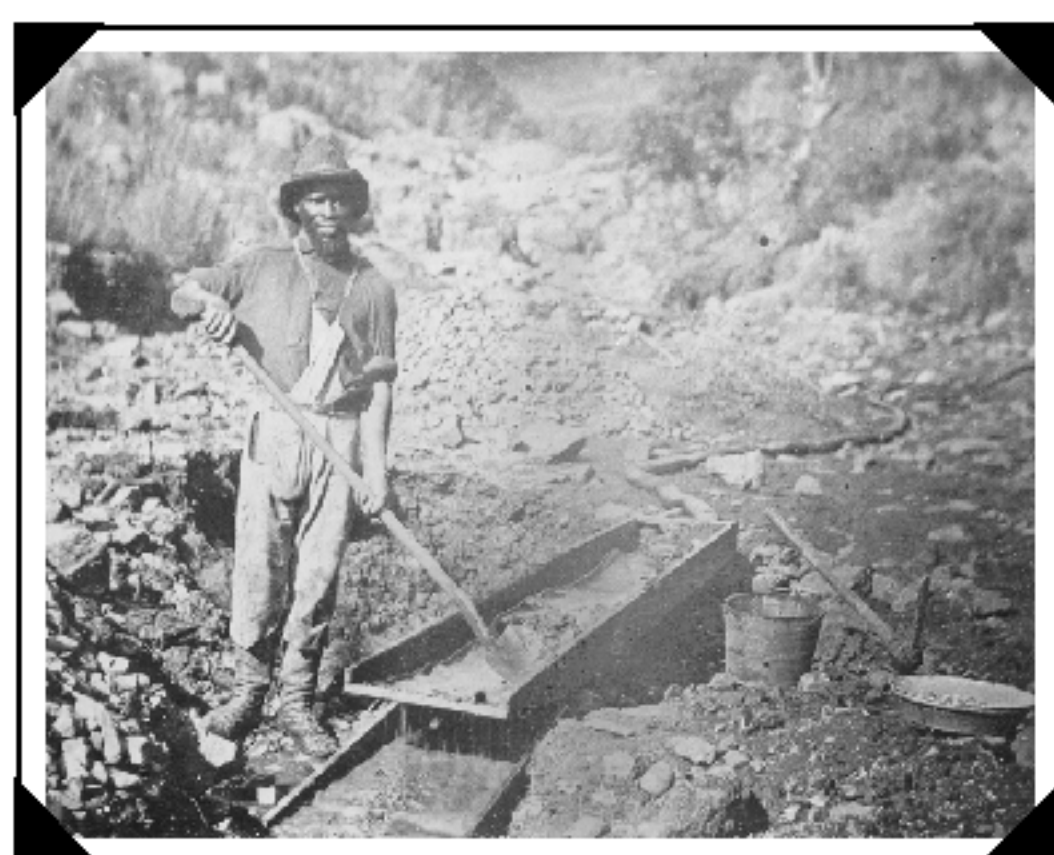
114°  
+ 32°

"The men who settled the country [California] imparted to it a good deal of their own nature, which knows no period of boyhood. The Americans spring at once from childhood, or almost infancy, to manhood; and California, no less rapid in its growth, became a full-grown State, while one-half of the world still doubted its existence."

J. D. Borthwick  
Three Years in  
California, 1857



Dry diggings, circa 1930s.  
Division of Mines and Geology archives.



Head of Auburn Ravine, 1852.  
Division of Mines and Geology archives.



A circa 1870s outing at a hydraulic mining operation.  
Division of Mines and Geology archives.

122°  
+ 34°



Chinese gold miners working a "Coyote Hole" in the Folsom area, circa 1900.  
Courtesy Natomas Company collection, Sacramento Archive and Museum Collection Center.



The working dredge Folsom No. 2, June 28, 1906.  
Division of Mines and Geology archives.

118°  
+ 32°

Copyright © 1997 by the California Department of Conservation, Division of Mines and Geology. All rights reserved. No part of this publication may be reproduced without the written consent of the Division of Mines and Geology. The Department of Conservation makes no warranty as to the reliability of the producer for any particular purpose.