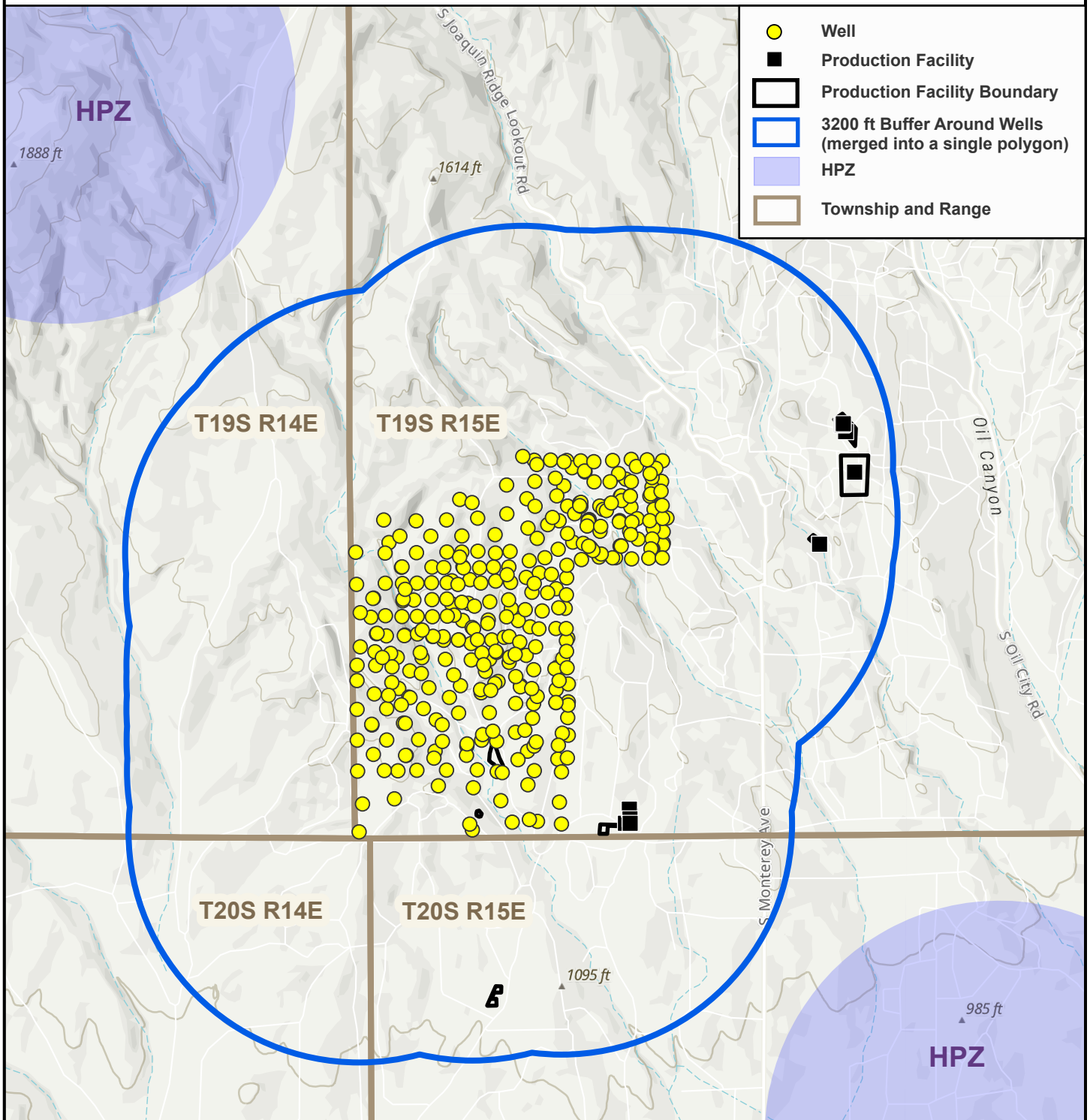


Sample Map for Annual Inventory

Wells Outside Health Protection Zone (HPZ) - Mapped at 1:24,000 Scale



Operator: Oil Company, LLC

Date: March 8, 2025

Oil & Gas Field: Coalinga

County: Fresno, Ca

Map Center Coordinates: 36.2339513, -120.3832830

Notes: The wells shown on this map have no sensitive receptors within a 3200 ft radius. The wells are outside a Health Protection Zone (HPZ).



0 1,000 2,000 ft

Scale 1:24,000

NAD83 California (Teale) Albers (Meters)

This document is provided as a hypothetical example and following this example does not ensure compliance with applicable requirements as they apply to actual circumstances.

CA Oil Company

12345 Main St
City, ST ZIP Code
Jan 1, 2023

Example Health Protection Zone Statement - Annual Submission Statement

Wells Outside HPZ

This statement has been prepared to fulfill the requirements of CCR section 1765.6(a)(3) and provides supporting information required by CCR section 1765.9(a)(1) regarding features within 3,200 feet of CA Oil Company wellheads and production facilities in the XYZ oil field.

All of CA Oil Company wellheads shown on the map are outside a Health Protection Zone (HPZ). They are situated on private land that is not open to the public. The land is zoned for agriculture uses. There are no sensitive or potential sensitive receptors located within 3,200 feet of any of the wellheads.

Sincerely,

John Smith

CA Oil Company Rep

This document is provided as a hypothetical example and following this example does not ensure compliance with applicable requirements as they apply to actual circumstances.