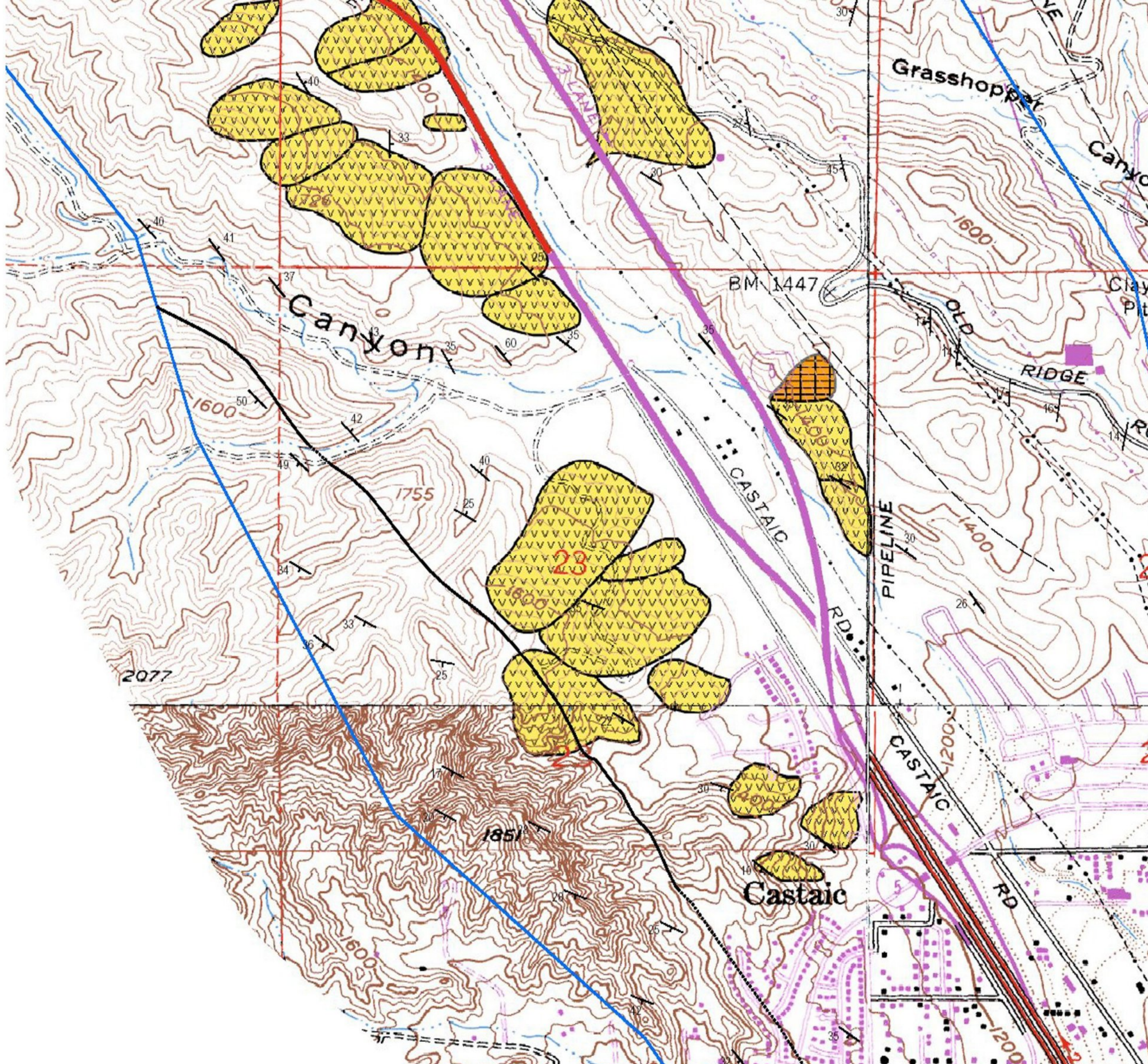
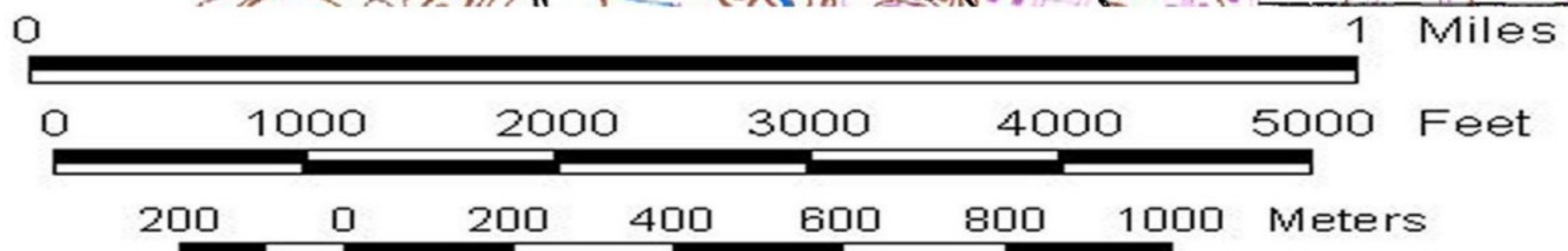


# Landslide Map of the Highway 5 corridor Los Angeles County, California



topographic base map from USGS Newhall, Val Verde, Warm Springs Mtn, and Whitaker Peak quadrangles



LANDSLIDES IN THE INTERSTATE 5 CORRIDOR BETWEEN VALENCIA AND GORMAN, LOS ANGELES COUNTY, CALIFORNIA  
 by B.D. Foster  
 Plate 1, Map 3 of 14