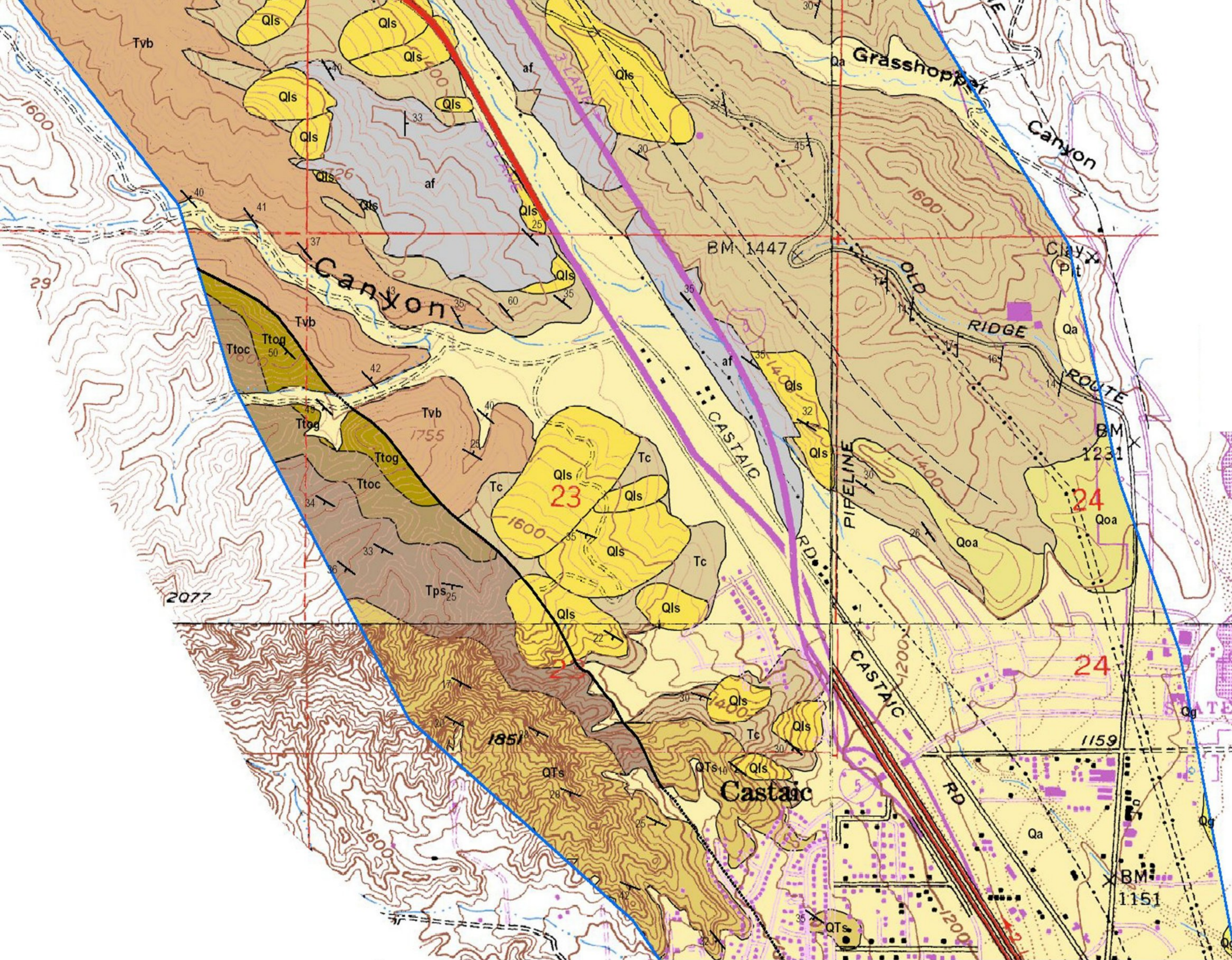


Geologic Map of the Highway 5 corridor Los Angeles County, California



topographic base map from USGS Newhall, Val Verde, Warm Springs Mtn and Whitaker Peak quadrangles



LANDSLIDES IN THE INTERSTATE 5 CORRIDOR BETWEEN VALENCIA AND GORMAN, LOS ANGELES COUNTY, CALIFORNIA
by B.D. Foster
Plate 1, Map 3 of 14