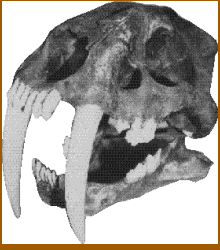


SABERTOOTHED CAT CALIFORNIA STATE FOSSIL



SABERTOOTHED CAT – CALIFORNIA STATE FOSSIL *Smilodon californicus*

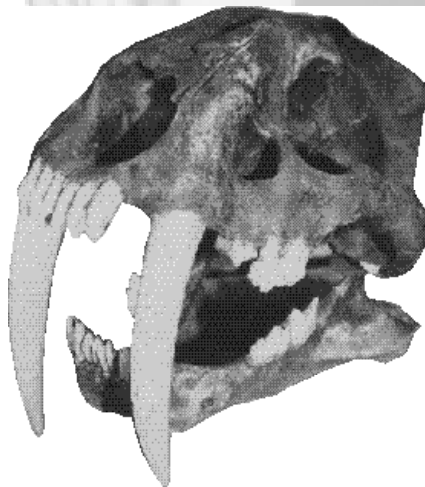
The carnivorous sabertoothed cats (extinct members of the cat family Felidae) flourished throughout North America from the late Eocene and early Oligocene (40 to 35 million years ago) until the close of the Pleistocene about 11,000 years ago. In California, the cat's fossilized remains are most abundant at the La Brea Tar Pits (late Pleistocene) in Los Angeles. Here, the sabertoothed cat, attracted by the cries of struggling creatures caught in the sticky pools of asphalt, hunted them and in turn fell into the pools.

In contrast to modern cats, sabertooths had exceedingly long upper canines used to stab and slice. The lower canines were correspondingly reduced in size and, at the front end of the lower jaw, there was often a flange used as a guard for the large upper canines. Because of the large dagger-like canines in the upper jaw, the skull of the sabertoothed cat was quite different from modern cats. Nasal openings were receded from the position in typical cat skulls and prominent bony ridges ran along the entire length of the hard palate. The lower jaw of the sabertoothed cat could open to an almost right angle when attacking. However, the biting strength of the lower jaw was not as great as in modern cats.

The body and limbs of the sabertoothed cat, though approximately the same size as the present-day African lion, were different. The sabertoothed cat's hind limbs were relatively light while the front limbs, rib cage and breastbone were strong and powerful. The short lower segments of the limbs indicate this cat wasn't a fleet-footed carnivore like the modern lion or tiger, but rather a predator of slow-moving mammals such as mammoths, mastodons and ground sloths. The sabertoothed cat probably gripped prey with its front limbs. With upper canines, it repeatedly stabbed a vulnerable spot on the victim's body. The backward nasal openings allowed the sabertoothed cat to breathe while its head was buried inside the victim. A strongly grooved gum covering the ridges of the hard palate may have aided in sucking blood.

The extinction of the sabertoothed cats may have been related to the decrease of the larger animals on which they preyed. There is some evidence that the mastodon was the favorite meal of some later-day species of the sabertoothed cats; both lasted in North America only until the end of the Pleistocene.

Sabertoothed cats are the most famous California Ice Age fossil. *Smilodon californicus* was one of the last surviving members of the formidable felines called sabertoothed cats.



A cast of *Smilodon californicus* skull from the La Brea Tar Pits. Fangs are 9 inches (23 centimeters) long. Photo by Jim Spriggs, California Division of Oil, Gas and Geothermal Resources.



Revised 5/2002

© California Department of Conservation, California Geological Survey, 2002. Reproduction of this CGS Note for classroom or public education purposes is encouraged and does not require written permission. However, please cite California Geological Survey as source.

The Department of Conservation makes no warranties as to the suitability of this product for any particular purpose.

♻️ Printed with soy ink on recycled paper.

For more information about fossils:

CALIFORNIA GEOLOGY magazine July/August 2001,
pages 26-29 and September/October 2001, pages 4-11.

The Page Museum at the La Brea Tar Pits

5801 Wilshire Blvd.
Los Angeles, CA 90036
323-934-PAGE
www.tarpits.org



Graphics by Dinah D. Maldonado, California Geological Survey.

Offices of the California Geological Survey

Publications and Information Office

801 K Street, MS 14-33
Sacramento, CA 95814-3532
(916) 445-5716

Southern California Regional Office

655 South Hope Street, Suite 700
Los Angeles, CA 90017-3231
(213) 239-0878

Bay Area Regional Office

185 Berry Street, Suite 210
San Francisco, CA 94107-1728
(415) 904-7707

www.conservation.ca.gov

THE RESOURCES AGENCY
MARY NICHOLS
SECRETARY FOR RESOURCES

STATE OF CALIFORNIA
GRAY DAVIS
GOVERNOR

DEPARTMENT OF CONSERVATION
DARRYL YOUNG
DIRECTOR