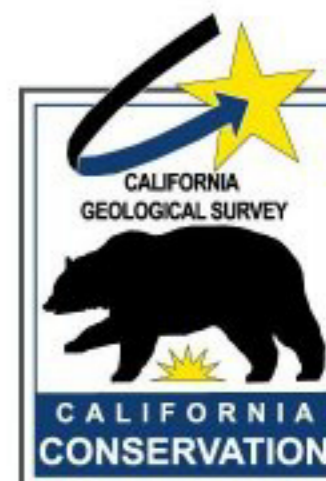
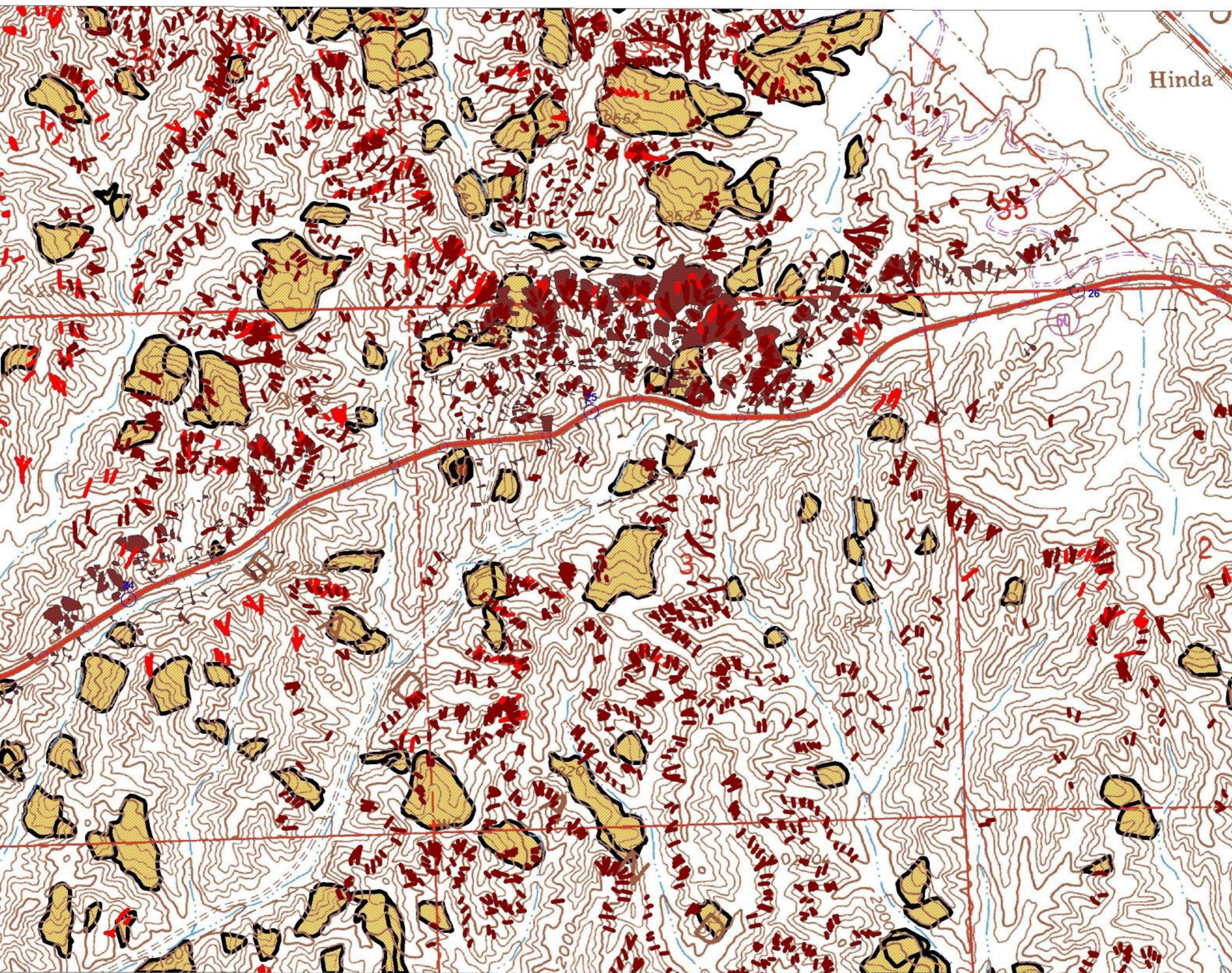
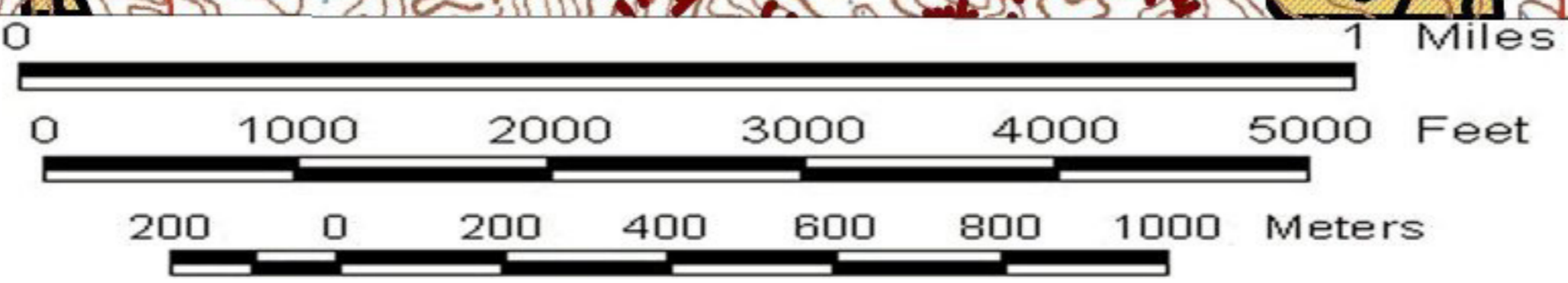


Landslide Map' of the Highway 60 corridor Riverside County, California



topographic base map from
USGS El Casco quadrangle



LANDSLIDES IN THE HIGHWAY 60 CORRIDOR
SAN TIMOTEO BADLANDS
RIVERSIDE COUNTY, CALIFORNIA
by M.W. Manson, C.W. Davenport, K.D. Brown,
C.J. Wills, and C.J. Domrose
Plate 2. Map 2 of 3