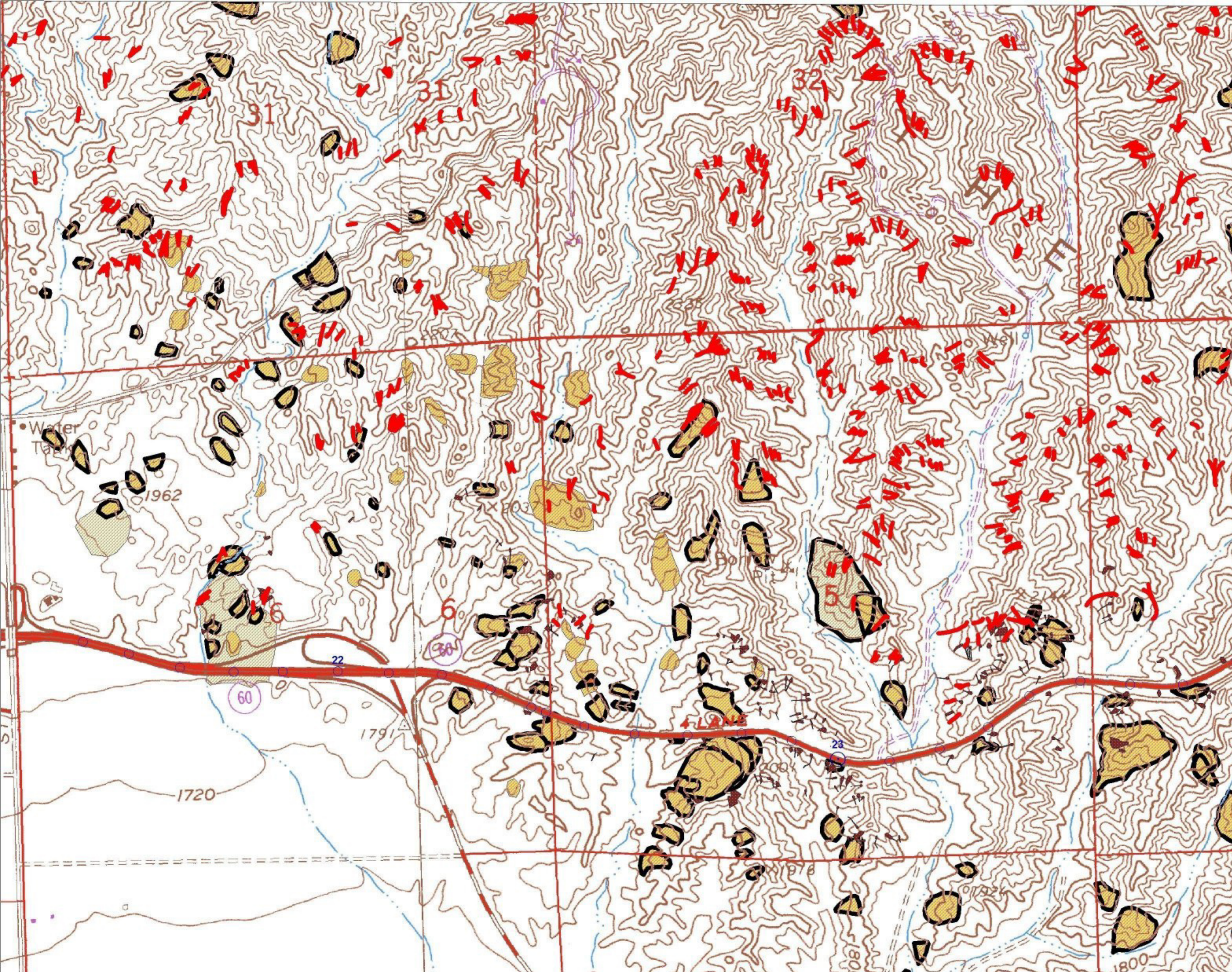
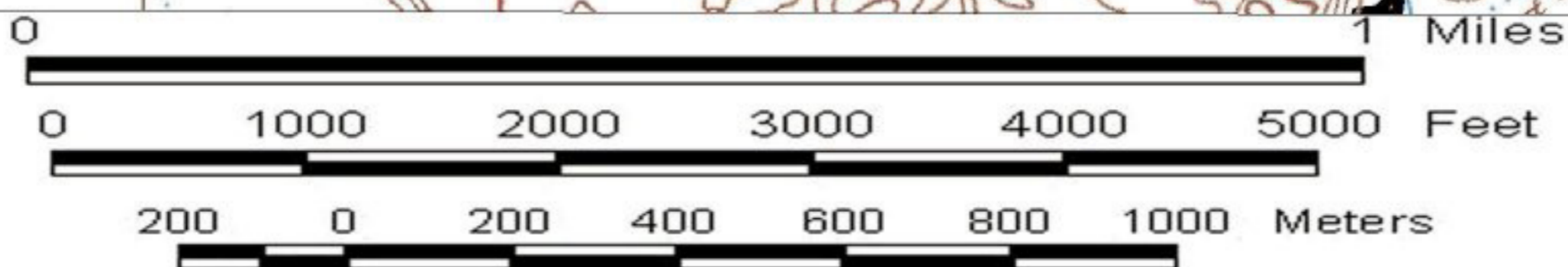


# Landslide Map of the Highway 60 corridor Riverside County, California



topographic base map from USGS Sunnymead and El Casco quadrangles



LANDSLIDES IN THE HIGHWAY 60 CORRIDOR  
SAN TIMOTEO BADLANDS  
RIVERSIDE COUNTY, CALIFORNIA  
by M.W. Manson, C.W. Davenport, K.D. Brown,  
C.J. Wills, and C.J. Domrose  
Plate 2. Map 1 of 3