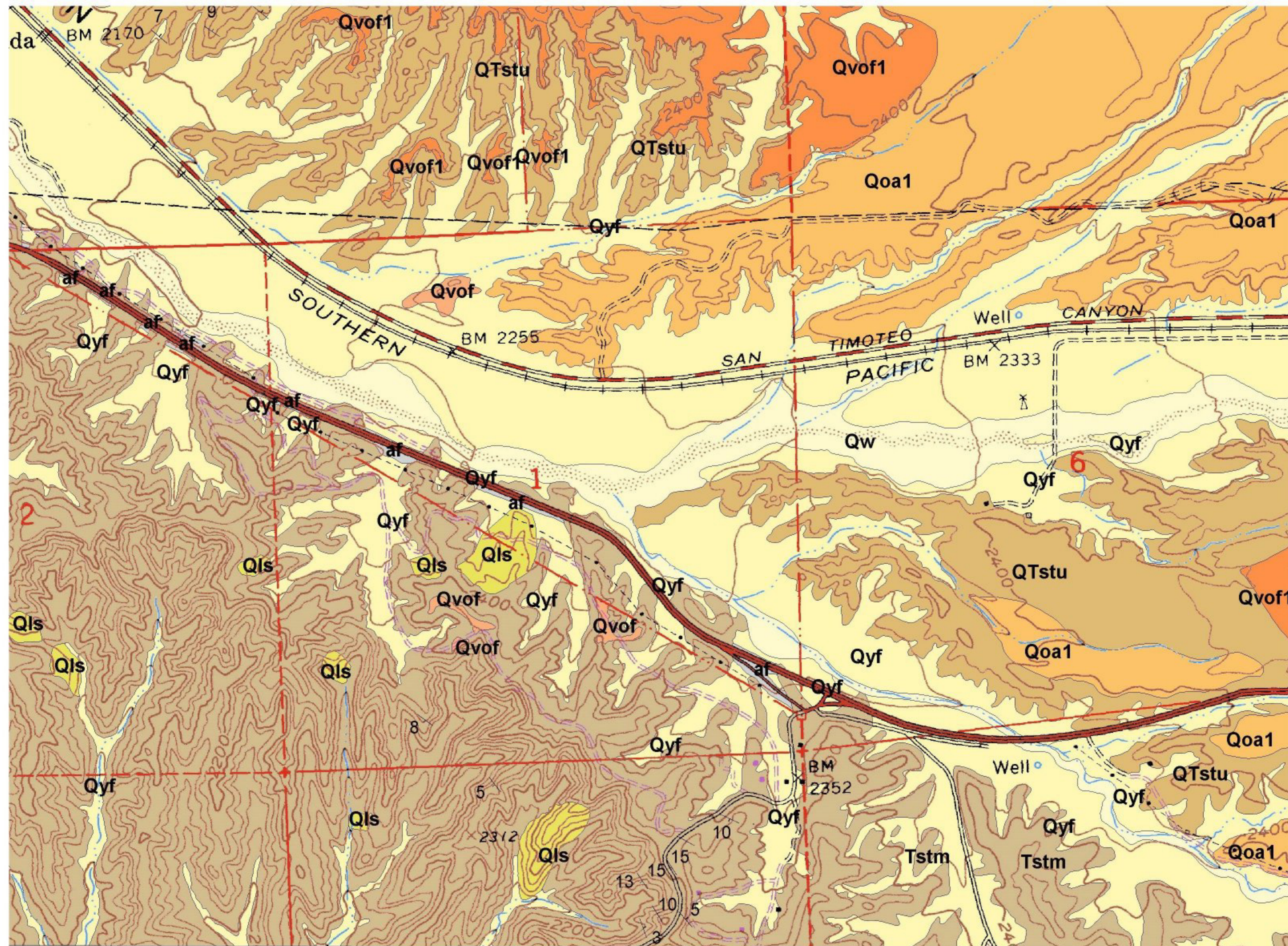


# Geologic Map of the Highway 60 corridor Riverside County, California



topographic base map from USGS El Casco quadrangle



LANDSLIDES IN THE HIGHWAY 60 CORRIDOR  
 SAN TIMOTEO BADLANDS  
 RIVERSIDE COUNTY, CALIFORNIA  
 by M.W. Manson, C.W. Davenport, K.D. Brown,  
 C.J. Wills, and C.J. Domrose  
 Plate 1, Map 3 of 3