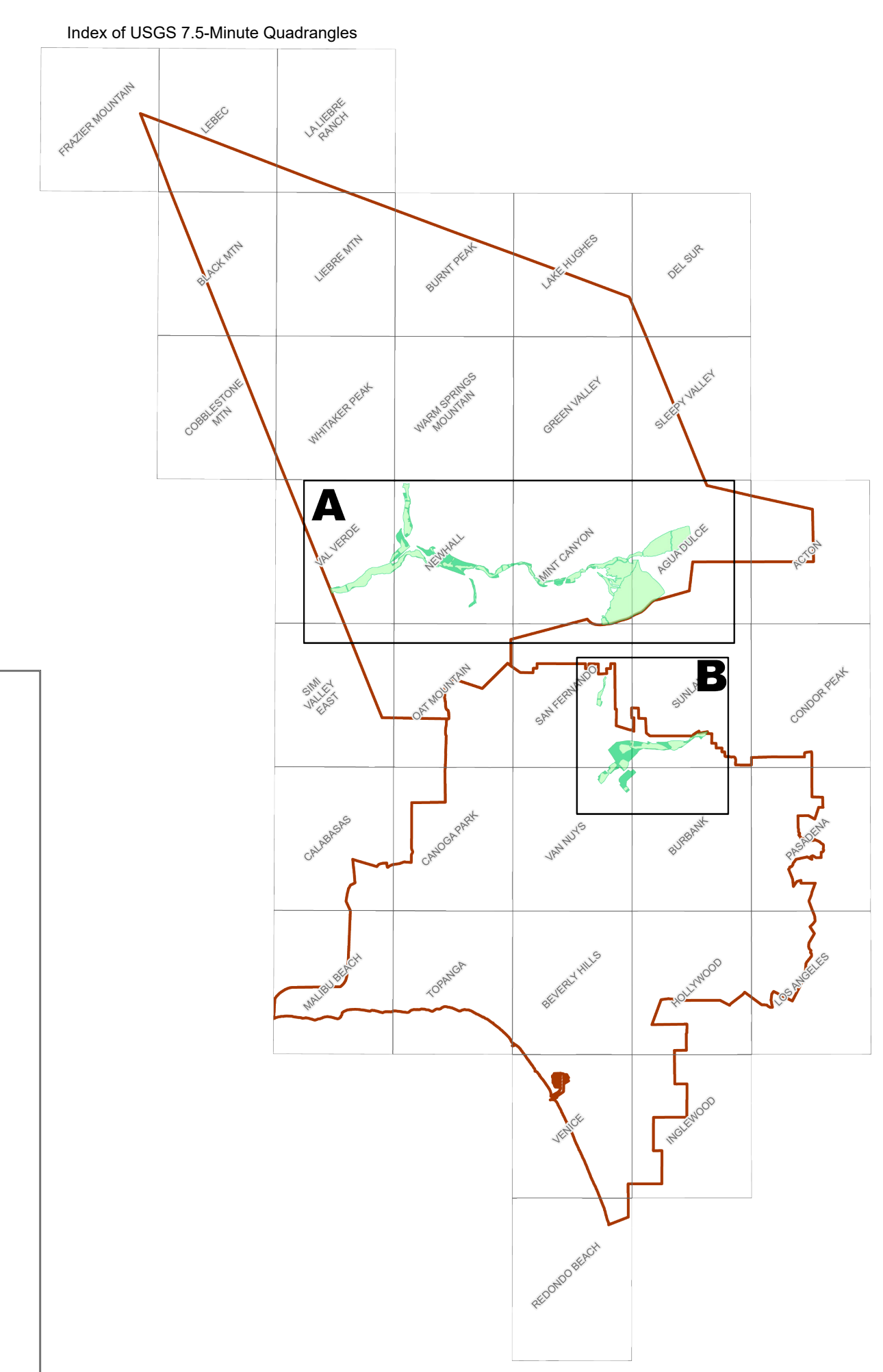
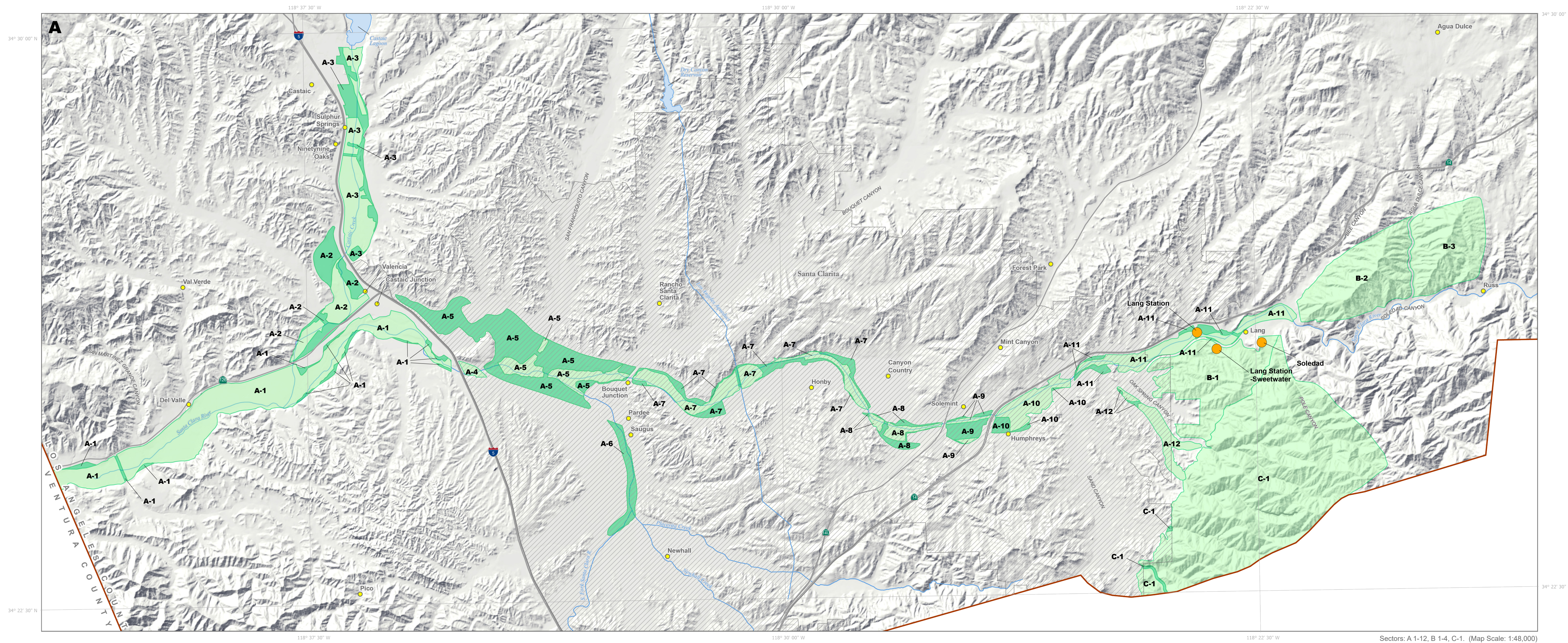


California Geological Survey

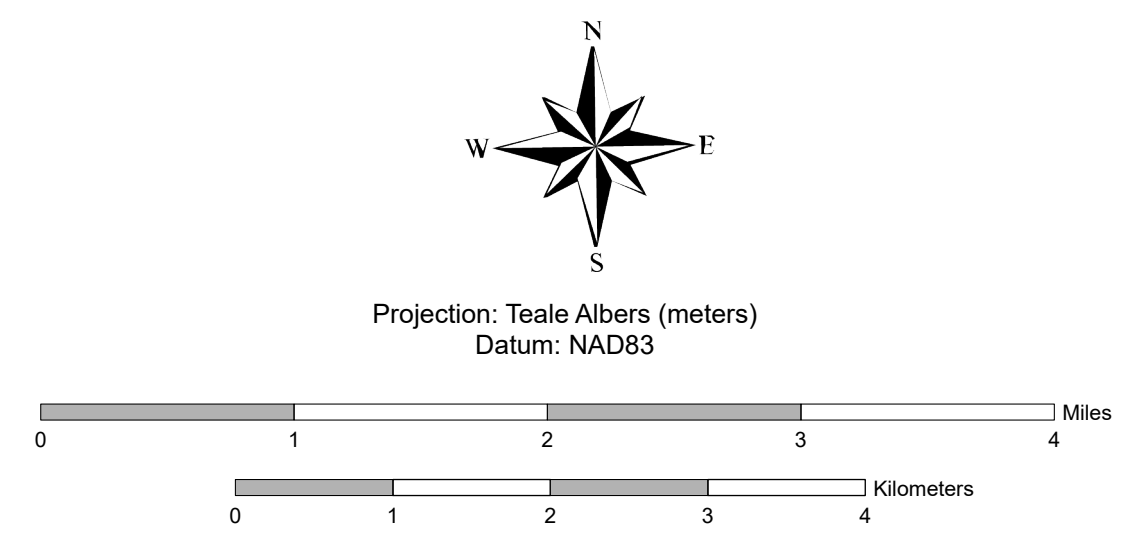
Updated Resource Sectors for Portland Cement Concrete Aggregate in the San Fernando Valley and Saugus-Newhall Production-Consumption Regions

By Catherine Wesoloski, David Reieux, and Brenda Callen

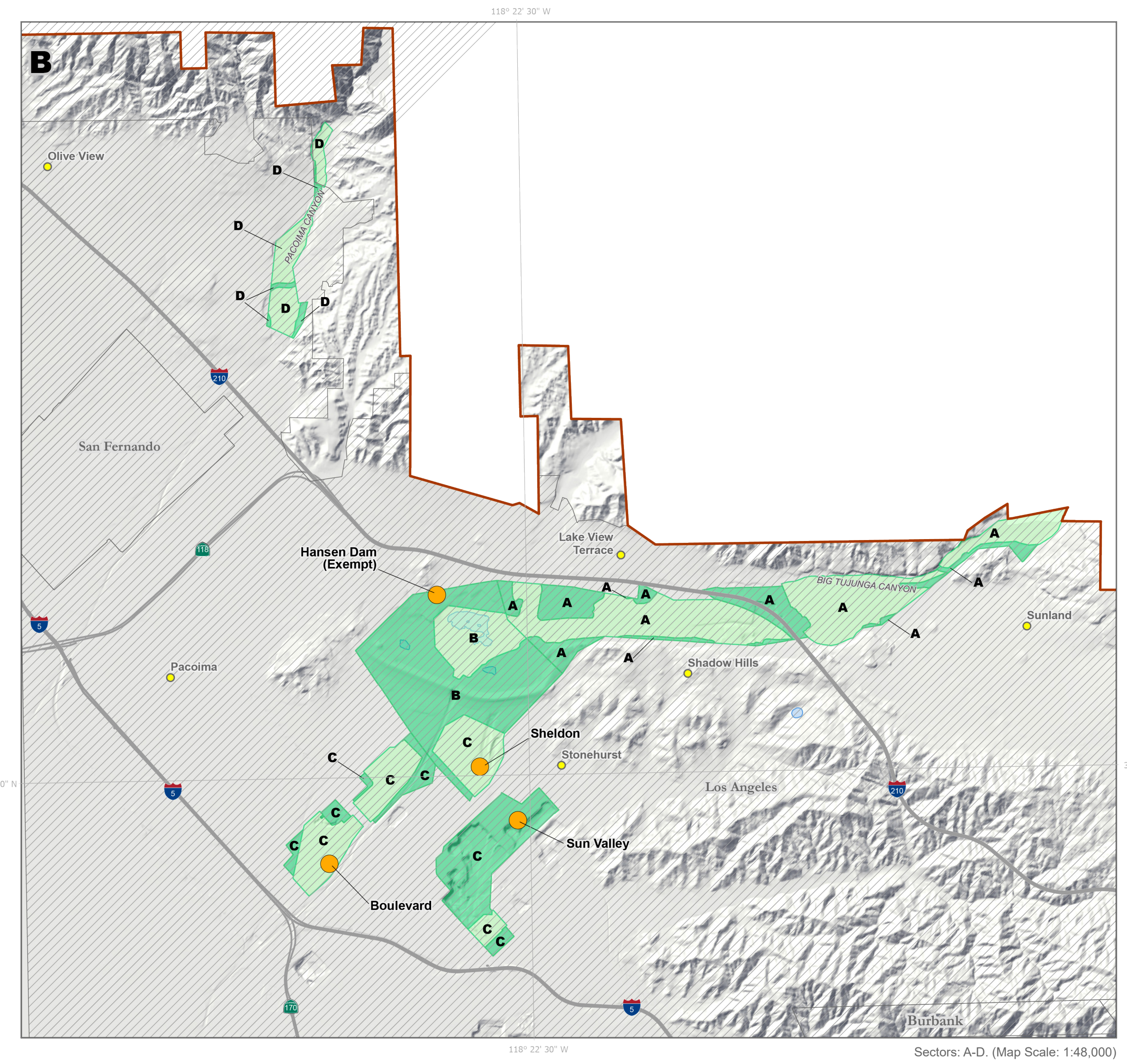
2021



- Sector containing regionally significant Portland cement concrete aggregate resources
- Sector depleted by mining, lost to incompatible land uses or, upon reevaluation, determined to no longer be significant
- Mine
- P-C Region
- City
- City, incorporated
- Water
- River, creek, or stream
- Interstate
- State Hwy



Web Accessibility Statement: If you find any part of this document to be inaccessible with assistive technology, visit our Accessibility web page at conservation.ca.gov to report the issue and request alternative means of access. To help us respond to your concern, please include the following three items in your request: 1. your contact information, 2. the title of this document, 3. the web address where you obtained the document.



Copyright 2021 by the California Department of Conservation, California Geological Survey. All rights reserved. No part of this publication may be reproduced without written consent of the California Geological Survey. The California Department of Conservation makes no warranties as to the suitability of this product for any particular purpose.
www.conservation.ca.gov/cgs